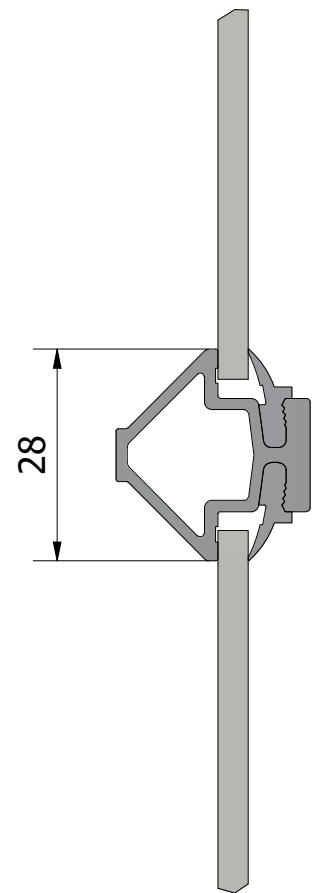
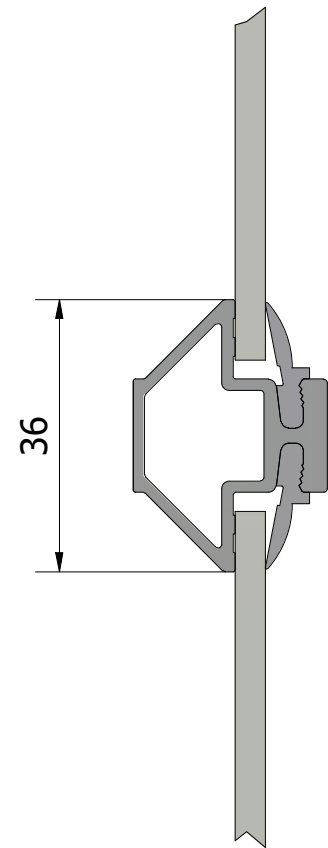


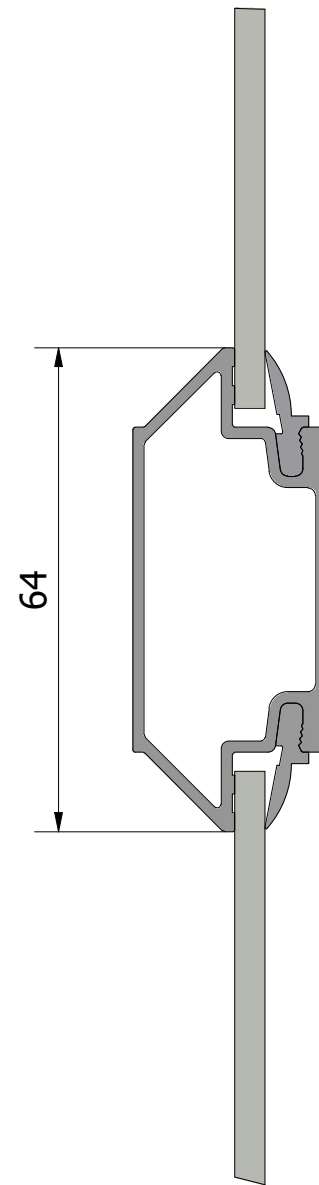
Epok
28 mm



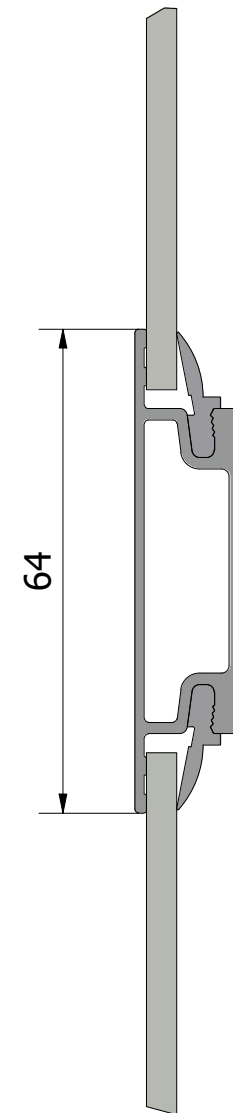
Epok
36 mm



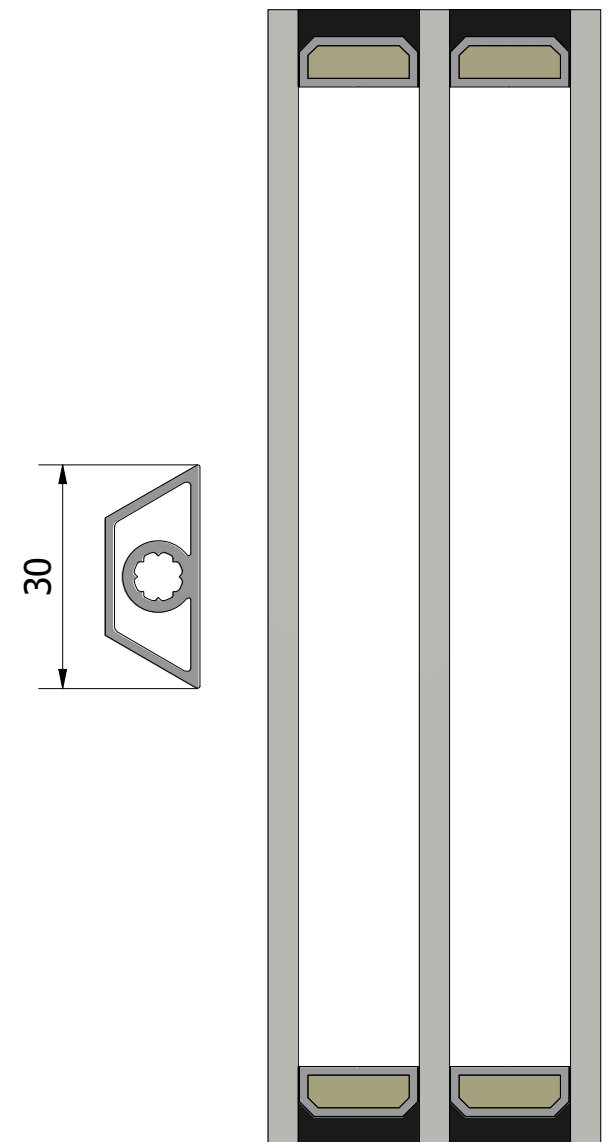
Epok
64 mm



Stil
64 mm

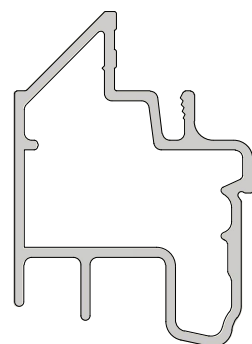


Detachable
30 mm

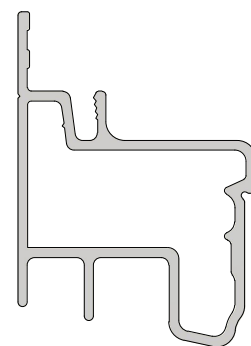


The profile of the outer sash determines the muntin bar profile.
Epok muntin bar fits the Epok outer sash etc..

Epok outer sash

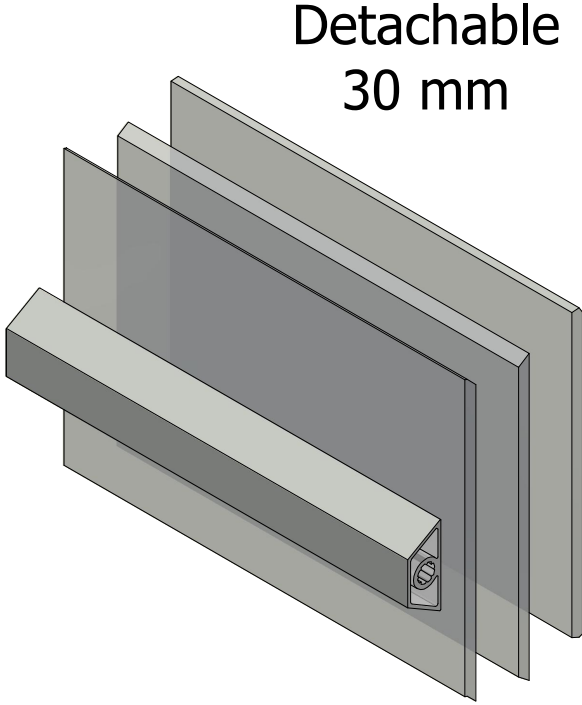
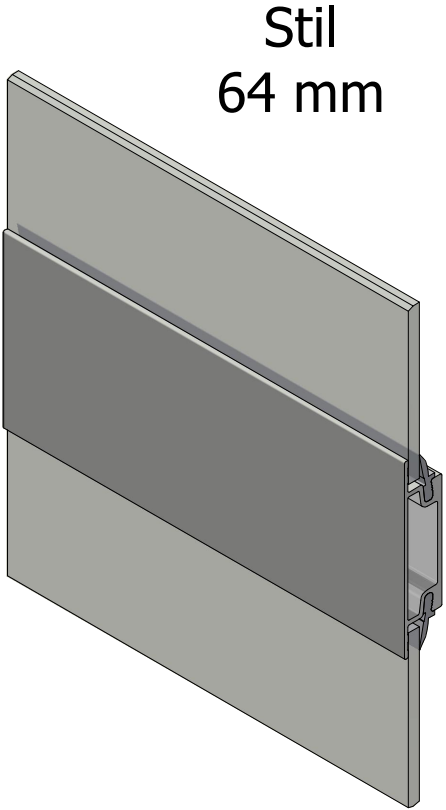
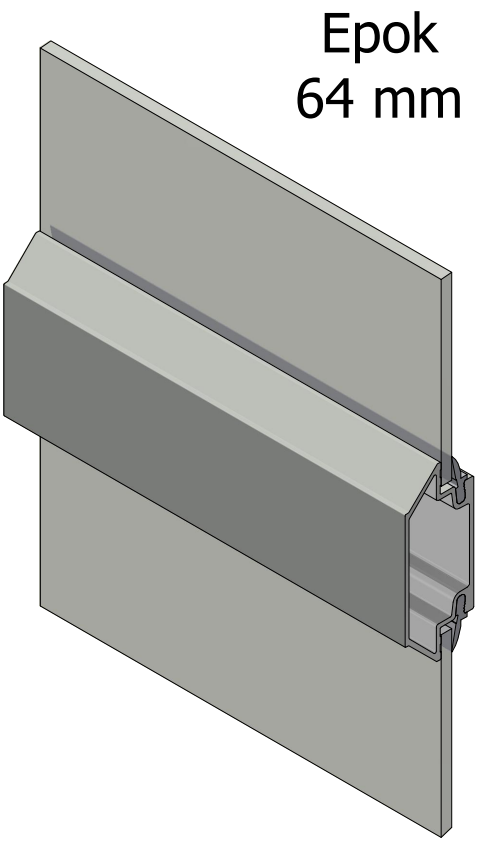
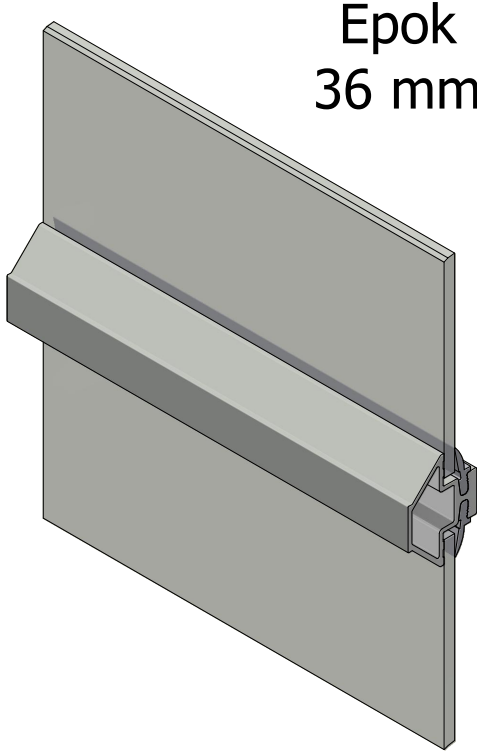
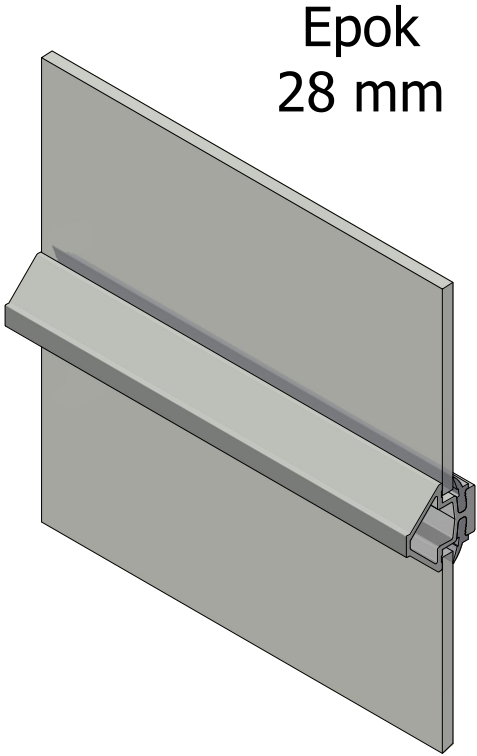


Stil outer sash



Detachable muntin bars are used in products without proper outer sashes. For example triple glazed windows or fixed frames.

Revision no.		Revision description		
General tolerances		Product name		Created by
ISO 2768-1, m				thomasn
Sheet size		Scale	Page	Creation date
A3		1 : 1	1	2022-11-11
Description		LEIAB muntin bar profile		
File name		MP-SPROJSWS_222.dwg		Drawing no.
				MP-SPROJSWS_221



Revision no.		Revision description		
General tolerances		Product name		Created by
ISO 2768-1, m				thomasn
Sheet size	Scale	Page	Description	
A3	1 : 1	2	LEIAB muntin bar profile	
LEIAB		View placement	File name	Drawing no.
			MP-SPROJSWS_222.dwg	MP-SPROJSWS_221